

The Bump Report

Quarter 1 Stocks and January WASDE

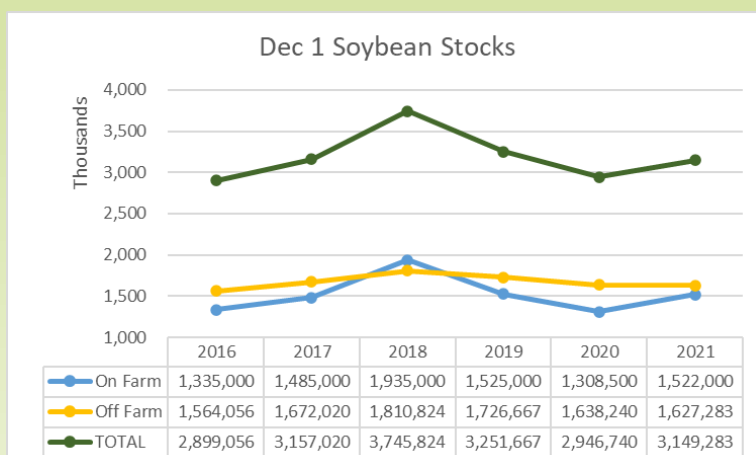
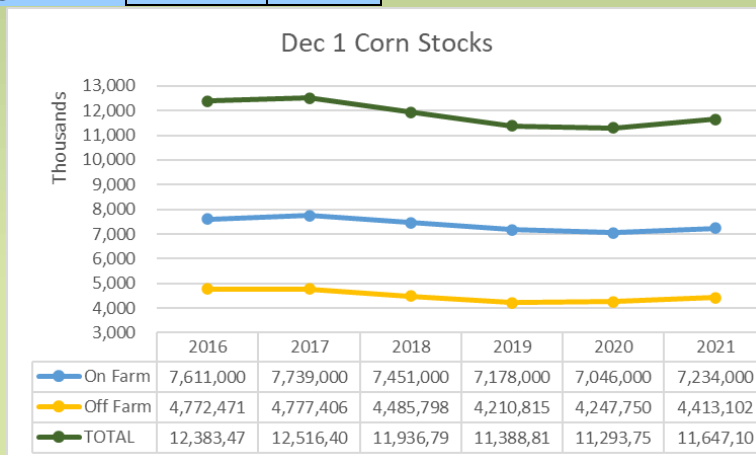
| Corn | Near-by | LY | 5 YR |
|----------|---------|-----|------|
| CR, IA | 4 | -10 | -7 |
| Decatur | 12 | 19 | 8 |
| St Louis | 20 | 30 | 14 |
| Soybean | Oct | LY | 5 YR |
| CR, IA | -75 | -20 | -35 |
| Decatur | 5 | 20 | -6 |
| St Louis | 25 | 32 | 4 |

The Jan report ended up being quite the snoozer in a highly volatile market. The biggest changes were made in soybean world ending stocks declining 6.8 mil tonnes compared to last month to 95.2 million due to larger than expected decreases in production in Brazil and Argentina. Corn world ending stocks were slightly lower than the average guess with a 3 mil ton decline to Brazil's production. Harvested acres on corn were increased by 315 mil acres from the previous report and corn used for Ethanol was bumped 80 mil bushels. This past week Ethanol production slowed down by

roughly 30 mil gallons from the week before. The head scratchers we found was a doubling of corn stock usage in Wisconsin. A year ago in quarter 1, 51.8 mil bushels of corn were used compared to 115.5 mil this year. The soybean balance sheet was virtually unchanged compared to a small increase in yield of .1 bpa and a small increase to crush.

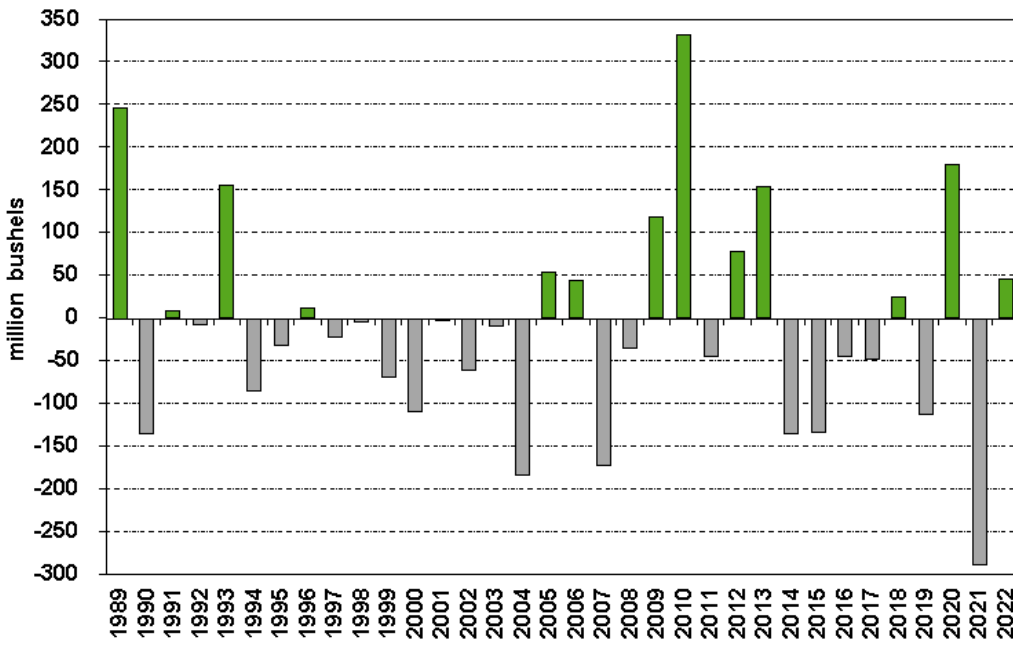
Week over week we continue to see soybean export inspections below expectations and YTD are 23% behind year ago exports while the USDA estimates exports down 10% as we enter the next 5 months where current world FOB values are cheaper in Brazil and Argentina.

| <u>Corn Jan-22</u> | <u>2021/22</u> | <u>2020/21</u> | <u>Soybean- Jan-22</u> | <u>2021/22</u> | <u>2020/21</u> |
|---------------------|----------------|----------------|------------------------|----------------|----------------|
| PLANTED | 93.4 | 90.7 | PLANTED | 87.2 | 83.4 |
| HARVESTED | 85.4 | 82.3 | HARVESTED | 86.3 | 82.6 |
| YIELD | 177 | 171.4 | YIELD | 51.4 | 51 |
| PRODUCTION | 15,115 | 14,111 | PRODUCTION | 4,435 | 4,216 |
| BEGIN STOCKS | 1235 | 1919 | IMPORTS | 15 | 20 |
| IMPORTS | 25 | 24 | BEGIN STOCKS | 256 | 525 |
| TOTAL SUPPLY | 16,375 | 16,055 | TOTAL SUPPLY | 4,707 | 4,761 |
| FEED/RESIDUAL | 5650 | 5602 | CRUSH | 2190 | 2141 |
| FOOD/SEED | 6760 | 6466 | EXPORTS | 2050 | 2265 |
| Ethanol | 5325 | 5028 | Seed /Residual | 118 | 97 |
| EXPORTS | 2425 | 2753 | TOTAL DEMAND | 4,357 | 4,504 |
| TOTAL DEMAND | 14,835 | 14,821 | END STOCKS | 350 | 257 |
| END STOCKS | 1,540 | 1,235 | STOCKS/USE | 8.0% | 5.7% |
| STOCKS/USE | 10.4% | 8.3% | | | |



Collette's Question
 In what region have we seen corn exports double compared to last year?

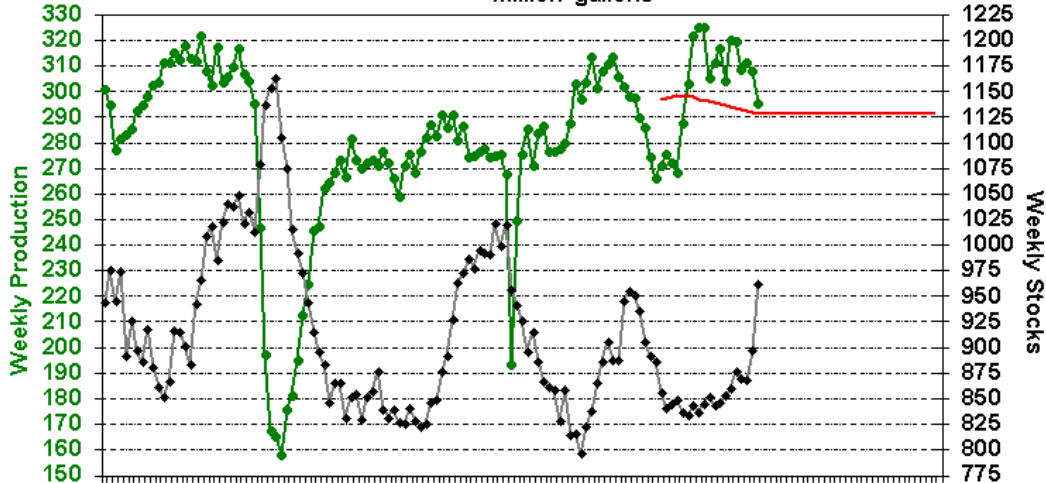
RJO'Brien January U.S. Corn Production vs Average Trade Estimate



RJO'Brien U.S. Corn Area, Yield, and Production by State
 USDA January Annual Report vs November 2021 Estimates

| | Plant. Acres (000 acres) | | | Harv. Acres (000 acres) | | | Yield (bu/acre) | | | Production (000 bu) | | |
|------|--------------------------|--------|----------|-------------------------|--------|----------|-----------------|--------|----------|---------------------|---------|------------|
| | Jan 2022 | Change | Nov 2021 | Jan 2022 | Change | Nov 2021 | Jan 2022 | Change | Nov 2021 | Jan 2022 | Change | Nov 2021 |
| AL | 355 | 5 | 350 | 345 | 5 | 340 | 163 | 1 | 162 | 56,235 | 1,155 | 55,080 |
| AR | 850 | 0 | 850 | 830 | 0 | 830 | 184 | 1 | 183 | 152,720 | 830 | 151,890 |
| CA | 420 | -30 | 450 | 50 | -45 | 95 | 188 | -7 | 195 | 9,400 | -9,125 | 18,525 |
| CO | 1,380 | -10 | 1,390 | 1,150 | 40 | 1,110 | 129 | -7 | 136 | 148,350 | -2,610 | 150,960 |
| DE | 175 | 0 | 175 | 172 | 2 | 170 | 184 | 9 | 175 | 31,648 | 1,898 | 29,750 |
| GA | 480 | 0 | 480 | 445 | 5 | 440 | 182 | 2 | 180 | 80,990 | 1,790 | 79,200 |
| IL | 11,000 | 0 | 11,000 | 10,850 | 50 | 10,800 | 202 | -5 | 207 | 2,191,700 | -43,900 | 2,235,600 |
| IN | 5,400 | 0 | 5,400 | 5,270 | 20 | 5,250 | 195 | 6 | 189 | 1,027,650 | 35,400 | 992,250 |
| IA | 12,900 | 0 | 12,900 | 12,450 | 0 | 12,450 | 205 | 4 | 201 | 2,552,250 | 49,800 | 2,502,450 |
| KS | 5,700 | 0 | 5,700 | 5,400 | 100 | 5,300 | 139 | 0 | 139 | 750,600 | 13,900 | 736,700 |
| KY | 1,550 | 0 | 1,550 | 1,440 | -10 | 1,450 | 192 | 3 | 189 | 276,480 | 2,430 | 274,050 |
| LA | 580 | 0 | 580 | 565 | 0 | 565 | 183 | 2 | 181 | 103,395 | 1,130 | 102,265 |
| MD | 470 | 0 | 470 | 425 | 35 | 390 | 175 | 3 | 172 | 74,375 | 7,295 | 67,080 |
| MI | 2,350 | 0 | 2,350 | 1,990 | 20 | 1,970 | 174 | -1 | 175 | 346,260 | 1,510 | 344,750 |
| MN | 8,400 | 100 | 8,300 | 7,840 | 40 | 7,800 | 178 | -8 | 186 | 1,395,520 | -55,280 | 1,450,800 |
| MS | 730 | 0 | 730 | 700 | 0 | 700 | 181 | -4 | 185 | 126,700 | -2,800 | 129,500 |
| MO | 3,600 | -50 | 3,650 | 3,430 | 50 | 3,380 | 160 | 0 | 160 | 548,800 | 8,000 | 540,800 |
| NE | 9,900 | 0 | 9,900 | 9,560 | -40 | 9,600 | 194 | 3 | 191 | 1,854,640 | 21,040 | 1,833,600 |
| NY | 1,050 | 0 | 1,050 | 585 | 85 | 500 | 167 | -3 | 170 | 97,695 | 12,695 | 85,000 |
| NC | 960 | 0 | 960 | 905 | -5 | 910 | 149 | 3 | 146 | 134,845 | 1,985 | 132,860 |
| ND | 4,100 | 0 | 4,100 | 3,630 | -190 | 3,820 | 105 | -3 | 108 | 381,150 | -31,410 | 412,560 |
| OH | 3,550 | -50 | 3,600 | 3,340 | -40 | 3,380 | 193 | 5 | 188 | 644,620 | 9,180 | 635,440 |
| OK | 340 | 0 | 340 | 295 | -5 | 300 | 150 | -5 | 155 | 44,250 | -2,250 | 46,500 |
| PA | 1,330 | 0 | 1,330 | 990 | 120 | 870 | 169 | 0 | 169 | 167,310 | 20,280 | 147,030 |
| SC | 400 | -20 | 420 | 380 | -10 | 390 | 139 | 5 | 134 | 52,820 | 560 | 52,260 |
| SD | 6,150 | 50 | 6,100 | 5,480 | -170 | 5,650 | 135 | -2 | 137 | 739,800 | -34,250 | 774,050 |
| TN | 1,020 | -20 | 1,040 | 960 | -10 | 970 | 170 | -1 | 171 | 163,200 | -2,670 | 165,870 |
| TX | 2,150 | 50 | 2,100 | 1,850 | 150 | 1,700 | 128 | -12 | 140 | 236,800 | -1,200 | 238,000 |
| VA | 520 | -20 | 540 | 370 | -20 | 390 | 160 | 5 | 155 | 59,200 | -1,250 | 60,450 |
| WA | 185 | 5 | 180 | 85 | 10 | 75 | 248 | 23 | 225 | 21,080 | 4,205 | 16,875 |
| WI | 4,000 | 50 | 3,950 | 3,040 | 100 | 2,940 | 180 | 8 | 172 | 547,200 | 41,520 | 505,680 |
| U.S. | 93,357 | 53 | 93,304 | 85,388 | 303 | 85,085 | 177.0 | 0.0 | 177.0 | 15,115,170 | 53,168 | 15,062,002 |

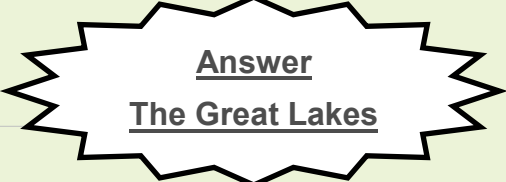
RJO'Brien EIA Weekly U.S. Ethanol Production and Stocks
 -million gallons-



*Weekly Production Needed is estimate of average necessary production for remainder of corn marketing year to reach USDA's 2021/22 corn for ethanol demand estimate of 5.250 bil bu

—●— Weekly Production — Weekly Production Needed* —◆— Weekly Stocks

World Supply & Demand



World Supply continues to shrink as production estimates for Brazil and Argentina work lower due to the ongoing drought. World soybean ending stocks were projected a year ago for the 20/21 at 84.31 mmt and today were reported ending the year at 99.9 mmt. World Corn ending stocks were projected at 283.83 mmt and were estimated today at 292.2 mmt. Below is the projection for this upcoming year.

RJO'Brien
USDA 2021/22 World Supply/Demand Factors (million tonnes)

| Exporters | Today Prod. | Last Month | Last Year | Today Exports | Last Month | Last Year |
|---------------|-------------|------------|-----------|---------------|------------|-----------|
| Brz. Soybeans | 139.0 | 144.0 | 138.0 | 94.0 | 94.0 | 81.7 |
| Arg. Soybeans | 46.5 | 49.5 | 46.2 | 4.9 | 5.4 | 5.2 |
| Arg. Corn | 54.0 | 54.5 | 50.5 | 39.0 | 39.0 | 39.5 |
| Brazil Corn | 115.0 | 118.0 | 87.0 | 43.0 | 43.0 | 19.5 |
| Ukraine Corn | 42.0 | 40.0 | 30.3 | 33.5 | 32.5 | 23.9 |
| Arg. Wheat | 20.5 | 20.0 | 17.7 | 13.5 | 13.5 | 11.5 |
| Aust. Wheat | 34.0 | 34.0 | 33.3 | 25.5 | 25.5 | 23.9 |
| Can. Wheat | 21.7 | 21.7 | 35.2 | 15.0 | 15.0 | 26.4 |
| EU Wheat | 138.9 | 138.7 | 126.9 | 37.5 | 37.0 | 29.7 |
| Russia Wheat | 75.5 | 75.5 | 85.4 | 35.0 | 36.0 | 39.1 |
| Ukraine Wheat | 33.0 | 33.0 | 25.4 | 24.2 | 24.2 | 16.9 |

| Importers | Today Prod. | Last Month | Last Year | Today Imports | Last Month | Last Year |
|----------------|-------------|------------|-----------|---------------|------------|-----------|
| China Soybeans | 16.4 | 16.4 | 19.6 | 100.0 | 100.0 | 99.8 |
| China Wheat | 137.0 | 137.0 | 134.3 | 9.5 | 9.5 | 10.6 |
| China Corn | 272.6 | 272.6 | 260.7 | 26.0 | 26.0 | 29.5 |
| Mexico Corn | 27.6 | 28.0 | 27.4 | 17.3 | 17.0 | 16.5 |

| End. Stocks 2021/22 | Today | Last Month | Last Year |
|---------------------|-------|------------|-----------|
| China Corn | 210.2 | 210.2 | 205.7 |
| China Wheat | 141.2 | 141.2 | 144.1 |
| World Soybeans | 95.2 | 102.0 | 99.9 |
| -Less China | 61.1 | 67.9 | 65.4 |
| World Corn | 303.1 | 305.5 | 292.2 |
| -Less China | 92.8 | 95.3 | 86.5 |
| World Wheat | 280.0 | 278.2 | 288.8 |
| -Less China | 138.8 | 137.0 | 144.7 |



Upcoming Reports
 NOPA Crush– Jan 18th
 Cattle on Feed– Jan 21st

This material has been prepared by a sales or trading employee or agent of BIS Commodities and is, or is in the nature of, a solicitation. This material is not a research report prepared by BIS Commodities Research Department. By accepting this communication, you agree that you are an experienced user of the futures markets, capable of making independent trading decisions, and agree that you are not, and will not, rely solely on this communication in making trading decisions. DISTRIBUTION IN SOME JURISDICTIONS MAY BE PROHIBITED OR RESTRICTED BY LAW. PERSONS IN POSSESSION OF THIS COMMUNICATION INDIRECTLY SHOULD INFORM THEMSELVES ABOUT AND OBSERVE ANY SUCH PROHIBITION OR RESTRICTIONS. TO THE EXTENT THAT YOU HAVE RECEIVED THIS COMMUNICATION INDIRECTLY AND SOLICITATIONS ARE PROHIBITED IN YOUR JURISDICTION WITHOUT REGISTRATION, THE MARKET COMMENTARY IN THIS COMMUNICATION SHOULD NOT BE CONSIDERED A SOLICITATION.